

Assumption University Summer Orientation

Exploring the City through Cuisine!

Kelly Square

Go check out the newest revitalization area in the city, Kelly Square. The Kelly Square, Green Street and Water Street area is home to the new Polar Park as well as many restaurants and other shopping experiences such as Table Talk Pie headquarters, the Crompton Collective and Worcester Public Market

Birch Tree Bread Company 138 Green Street

<http://www.birchtreebreadcompany.com>

Bakery & cafe serving breads, pastries, sandwiches & coffee in a spacious, light-filled venue

Crompton Collective 138 Green Street

<http://www.cromptoncollective.com/>

curated boutique marketplace located in a historic Worcester mill building. It is designed to celebrate our local independent makers and our love of old things.

Lock 50 50 Water Street

<https://lock50.com/>

An award-winning, upscale yet comfortable Worcester restaurant located in Worcester's Historic Canal District serving American cuisine inspired by flavors from around the world.

Polar Park 122 Madison Street 

<https://www.milb.com/worcester>

Home of the Worcester Red Sox

The Queen's Cups 56 Water St.

<https://thequeenscups.com/>

Creative and delicious hand-crafted cupcakes and desserts.

Table Talk Pies 120 Washington Street

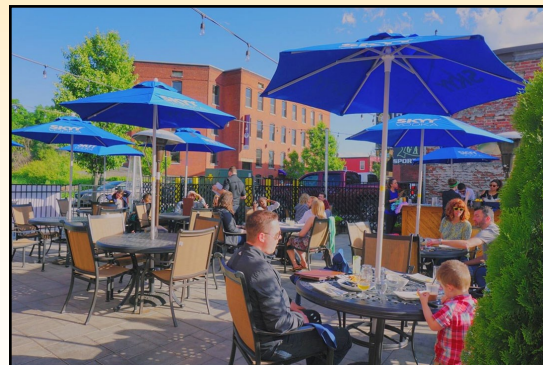
<http://www.tabletalkpie.com>

Headquarters of the national brand!

Worcester Public Market 

<https://www.worcesterpublicmarket.org/>

multi-vendor, food-oriented marketplace in the European tradition, featuring street-oriented business of various stripes, a small-merchant market floor, the foodie-heaven Market Pantry, and a vibrant food court



Lock 50 Restaurant & Wine Bar



Worcester Public Market



The Queen's Cups



Assumption University Summer Orientation

Exploring the City through Cuisine!

Downtown Worcester

Stay a bit closer to campus and check out some of the Assumption Student's favorite eateries!



Mezcál

Blue Jeans Pizza 270 Park Ave.

<https://bluejeanspizza.com/>

Serving Italian thin-crust and deep dish pizzas for over 35 years!

Boynton Restaurant & Spirits 119 Highland St.

<https://www.boyntonrestaurant.com/>

What started as a small tavern in the 1930's for college students in the area, The Boynton is now a local favorite for pizza, sandwiches and entrees.

Bushel 'n Peck Summit 17 E Mountain St.

<https://www.bushelnpeckdeli.com/>

Family-owned and operated deli serving made to order sandwiches and salads.

Choose & Mix 5 E. Mountain St.

<https://www.chooseandmix.com/>

Authentic Korean Bibimbap made to order and served in a hot stone pot.

Mercantile 2 Mercantile Street 

<https://www.themercantileworchester.com/>

Serving up New American Tavern Cuisine in a two-floor full-service restaurant and bar with rooftop seating world inspired snacks and entrees, brick pizza oven

Mezcál 11 E Central Street

<https://www.mezcaltequilakitchen.com/menu> 

Traditional Mexican plates with the colors and flavors of the Southwest.

Nancy Chang's 372 Chandler St.

<https://nancychang.com/>

Discover an eating philosophy that combines freshness and flavor with low fat, healthy Asian cuisine.

Nu Kitchen 335 Chandler St.

<https://www.thenukitchen.com/>

Quality Eats. Pairing a passion for entertaining with a commitment to a healthy lifestyle.

The Fix 108 Grove St.

<https://www.thefixburgerbar.com/menu>

Creative, customized handmade burgers served with house-made sodas and shakes!

The Sole Proprietor 118 Highland Street

<https://thesole.com>

Seafood, sushi & raw bar items paired with an extensive wine list at this longtime elegant eatery.




The Boynton



The Fix Burger Bar



The Sole Proprietor

 Denotes Outdoor Seating



**Assumption
University**

Assumption University Summer Orientation

Exploring the City through Cuisine!

Shrewsbury Street

This 1.5 mile long street is home to over 20 eateries and breweries! Park your car anywhere and walk to one of the local breweries and then walk to one of the local restaurants for your meal!

Café Reyes 421 Shrewsbury Street

www.cafereyes.org

Cuban restaurant offering breakfast, sandwiches & empanadas in a warm, vibrant atmosphere.

Flying Rhino Café & Watering Hole 278 Shrewsbury St. 🐾

<https://www.flyingrhinocafe.com/>

An eclectic mix of bold flavors, hearty soups, gourmet salads and creative entrees.

Funky Murphy's 305 Shrewsbury Street 🐾

<https://www.funkymurphys.com/>

Unfussy modern Irish sports bar & grill providing pub grub, live bands, DJs & trivia nights.

Grill 352 & Kabab 352 Shrewsbury Street

<https://grillkababonline.com/>

Serves a fusion of American and Middle Eastern Cuisines and Flavors - Kababs, curry specials, salads & more

Mexicali Cantina Grill

<https://mexicalicantinagrill.com/>

Authentic Mexican cuisine in the center of Shrewsbury Street

One Eleven Chop House 111 Shrewsbury Street

<https://www.111chophouse.com/>

Celebrated steakhouse classics & super-sized wine list in a posh, white-tablecloth setting.

Redemption Rock Brewery & Café 333 Shrewsbury Street 🐾

<https://www.redemptionrock.beer/>

Fresh, flavorful craft beer brewed and served in-house - Hot and nitro cold brew coffee drinks from local roasters, including Acoustic Java and Atomic Coffee Roasters

Via Italian Table 89 Shrewsbury St. 🐾

<https://www.viaitaliantable.com/>

An urban take on classic Italian dining.

Volturno's Pizza Napoletana 72 Shrewsbury St.

<https://www.volturnopizza.com/>

Traditional Italian pizza, recognized by the Associazione Pizzaiuoli Napoletani.

Wormtown Brewery 72 Shrewsbury Street 🐾

<http://wormtownbrewery.com/>

"A Piece of Mass in Every Glass" means our beers are crafted with the freshest ingredients for the freshest beer

Wonder Bar 121 Shrewsbury Street

<https://www.wonderbarpizza.com>

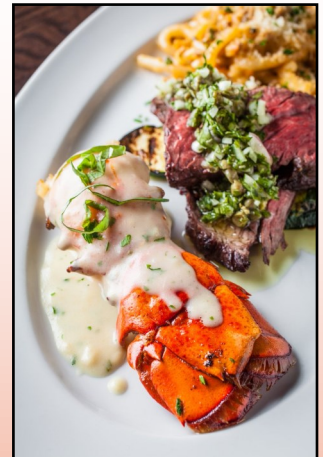
Compact, landmark eatery serving thin-crust pies, burgers & draft brews



The Flying Rhino



Mexicali Cantina



The Sole



Funky Murphy's

🐾 Denotes Outdoor Seating